

PERFORMAIR MIST



In addition to its high-performance filtration and self-cleaning system, the PERFORMAIR MIST hood protects the ventilation system from sparks and hot fumes made by charcoal cooking, thus preventing fire hazards.

The mist system works by intermittently spraying water to cool the hood and its filters and the hot fumes.

This intermittent misting is made possible by the very nature of our PERFORMAIR clay ball filter, a perfect spark arrestor, enabling water savings of up to 90% compared with a traditional water mist hood with a continuous spraying of water.

This feature can be used in combination with an On-Demand Ventilation System, saving even more water.

ADVANTAGES

- ADAPTED FOR SOLID FUEL COOKING
- OPTIMAL FIRE SAFETY
- WATER SAVING
- HIGH-PERFORMANCE FILTRATION
- AUTOMATIC AND BIOTECHNOLOGICAL
- ENVIRONMENTALLY FRIENDLY
- PREMIUM AND MODULAR DESIGN

Patented filtration technology

Removal of grease on wide range of air speed
Spark arrestor

Compact design

Integrated washing cabinet
Reduces space
Easy installation

Double intake points

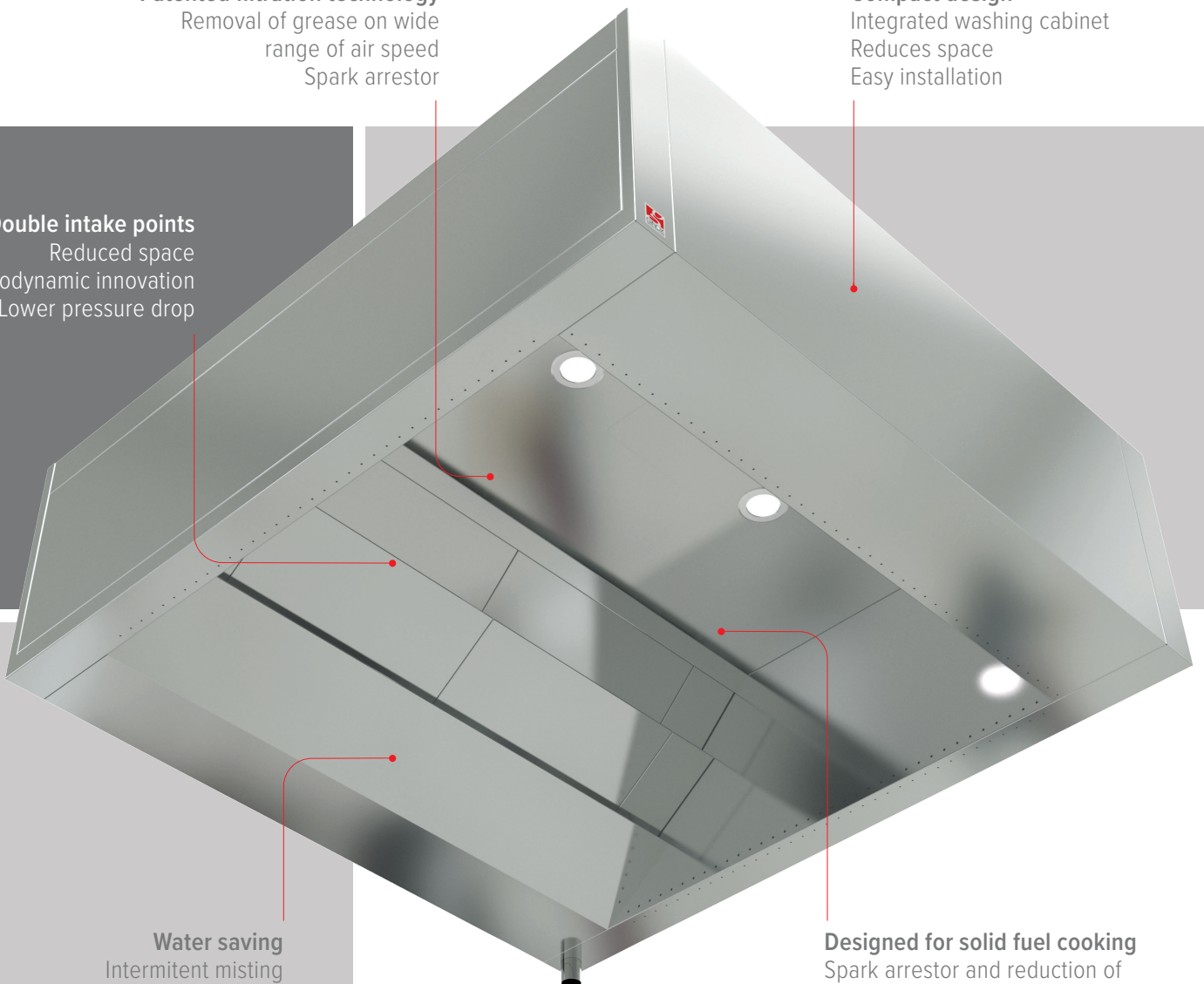
Reduced space
Aerodynamic innovation
Lower pressure drop

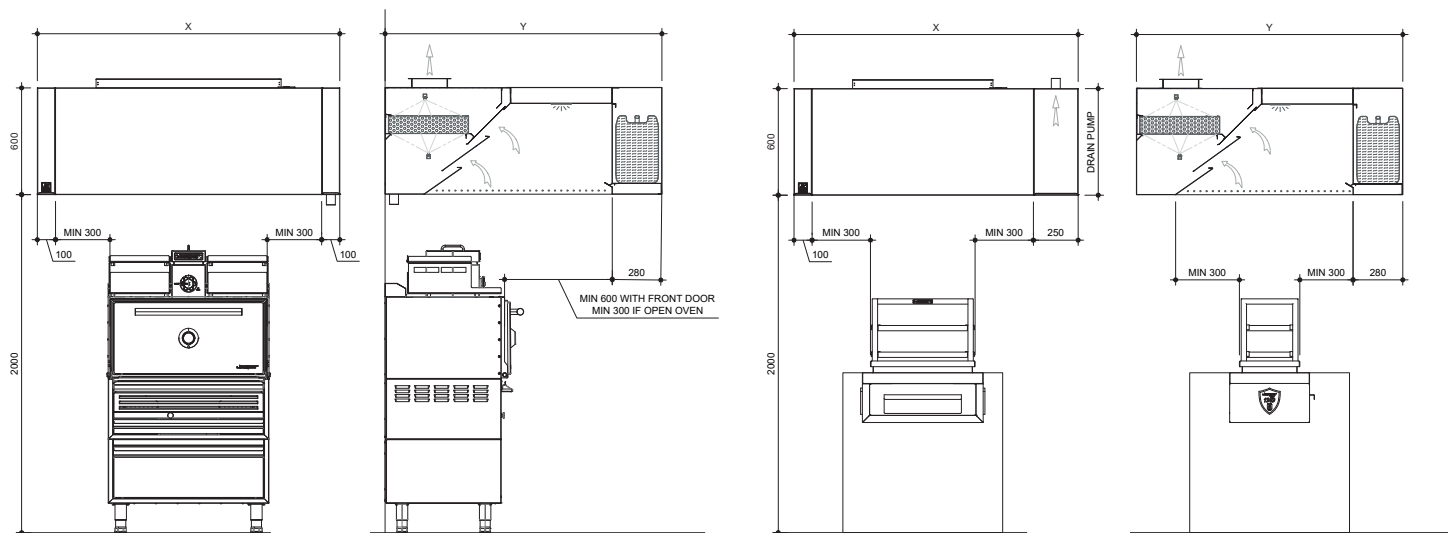
Water saving

Intermittent misting
Saves up to 90% of water consumption

Designed for solid fuel cooking

Spark arrestor and reduction of fumes temperature
Optimal fire safety





PerformAir Mist type		Robatta-S Wall	Robatta-M Wall	Robatta-L Wall	Robatta-S Island	Robatta-M Island	Robatta-L Island	Oven-S Wall	Oven-M Wall	Oven-L Wall
Max air flow (m3/h)		3200	4000	5600	3200	4000	5600	3200	4000	
Length (mm)		1350	1800	2250	1600	2050	2500	1500	1700	
Width (mm)		1100			1500			1700		1900
Height (mm)		600								
Water mist consumption (L/min)		from 1.6 to 2,8 L/min								
Electrical connection		1L-N-PE 230VAC / 10 A								
Water connection - cold		1", max flow 28 L/min, min 5°C, max 25°C								
Water connection - hot		1", max flow 28 L/min, min 50°C, max 80°C								
Water pressure		3 bar dynamic								
Drain pump system		optional			included			optional		
Drain connection		Ø ext 50 mm, metal, max 28 L/min								
	Ref.	WLRS141160	WLRM181160	WLRL231160	ILRS161560	ILRM211560	ILRL251560	WLOS151760	WLOM171760	WL0L171960

Options										
LaminAir cassette* 1	Ref.	MU14	MU18	MU23	MU32	MU41	MU50	MU15	MU17	MU17
PulsAir system * 2	Ref.	PU								
DALI power supply	Ref.	DA								
Drain pump system	Ref.	DP								
ecoAzur® * 3	Ref.	EA								



*1 For make-up air diffusion. 40-60% of max exhaust flow. Size: hood length x 300mm width x 600mm height.
 *2 5-10% of max exhaust flow.
 *3 Includes optical and temperature probes, processor and display.
 GINOX SWISS KITCHEN reserves the right to modify the prices and specifications without notice.

CERTIFICATIONS, SIGNS OF EXCELLENCE



GINOX SA

Route des Châtaigniers 13
 1816 Montreux
 Switzerland
 +41 21 925 49 49
 info@ginoxgroup.com

Chemin Louis-Hubert 3
 1213 Petit Lancy, Genève
 Switzerland
 +41 22 849 83 11
 info@ginoxgroup.com

ACTIVE ASSOCIATIVE PRESENCE



GINOX UAE LLC

Exit 119,
 Ras al Khaimah
 United Arab Emirates
 +971 7 244 4567
 info@ginoxgroup.com



GINOXGROUP.COM

